



EnhanceMovie

Video enhancement software with sets of powerful filters

User Guide

EnhanceMovie is a drag-and-drop video editing software that helps you improve quality of your video files just in seconds!

Please print out this User Guide and consult it as you use EnhanceMovie for the first time to familiarize yourself with its features.

EnhanceMovie Enhances Your Movie Instantly

Simply select the filters you want to apply and they will improve the quality of your videos in a second. Most of filters work automatically, so you don't have to care about their settings. The filters will choose the best settings for any of your video files, and you can just enjoy the results!

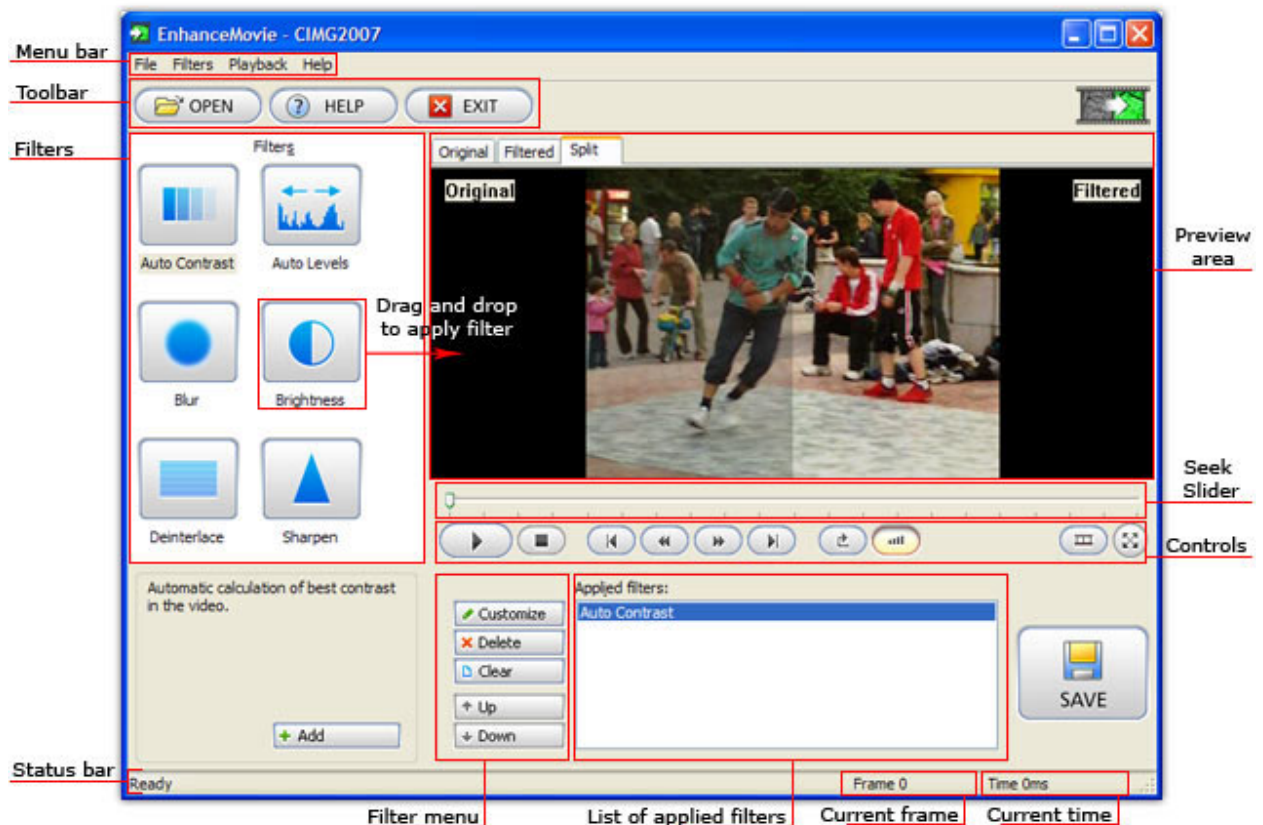
Drag-and-Drop

Just drag and drop the filters to add them to your video, or drag them back to return to the initial state.

EnhanceMovie supports all popular video formats including AVI, MPEG, MOV, VOB and WMV. You can edit AVI, MPEG, MOV, WMV formats and save videos in AVI and MPEG formats.

You can also use EnhanceMovie as AVI, MPEG, MOV, WMV video player.

The Look



Preview Area

This is where EnhanceMovie displays your current video. It has three modes:

- **Original:** shows original video files, without the filters applied.
- **Filtered:** shows the video file with the filters applied. This is exactly how your movie will look like after you save it.
- **Split:** A split mode helps see the changes and analyze the filters' settings. The Preview area is divided into two parts in this mode. The left half displays the original file, while the right one displays the movie with the filters applied.

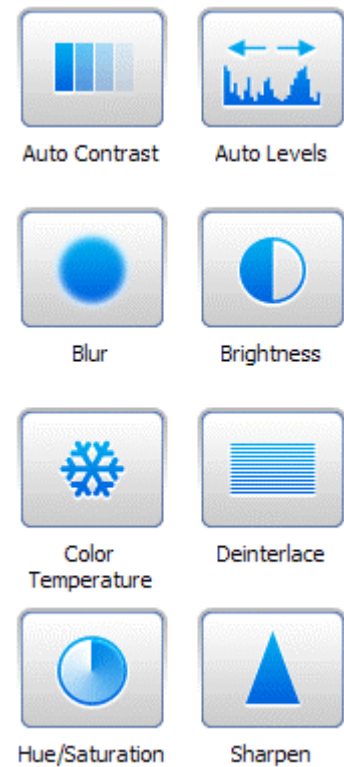
Filters

This list contains filters you can use to enhance your video. Just drag and drop the filters to the Preview Area to apply them.

- **Auto Contrast:** automatically adjusts contrast of a video. Dark parts become darker, and the bright ones brighter.
- **Auto Levels:** automatically adjusts balance of colors. You can get best results when using Auto Contrast and Auto Levels filters together.
- **Blur:** smoothes the edges and eliminates noise. Use it when your video is zoomed in with digital zoom or to improve quality of enlarged small-size clips.
- **Brightness/Contrast:** this filter provides advanced options for the brightness and contrast adjusting. The filter allows manual enhancement

for highlights and shadows, making them darker or lighter. Use this filter to repair very dark videos or when automatic filters give up.

- **Deinterlace**: removes interlace effect from the movie. If you shoot fast moving objects and get a "striped" picture, this filter will repair your video.
- **Sharpen**: focuses blurry frames. It makes the image more detailed, however it may increase the amount of noise.
- **Hue/Saturation**: fixes colors and chroma in a video. Use it if your video clip was captured with too little saturation, and you need to increase it.
- **Color Temperature**: as the name says, this filter "warms up" or "cools down" the colors in a video. Videos shot in incandescent light often appear too warm, and videos shot outdoors in sunlight may have a blue hue. Use this filter to fix both.



List of Applied Filters

This list contains filters that you applied to the current video. From this list, you can move filters up or down, delete them and open customization dialogs.

- **To move a video filter up or down:**

1. In the List, select the video filter you want to move.
2. Click the Up/Down button to move up/move down the selected filter



- **To remove a video filter:**

1. In the List, select the video filter you want to remove.
2. Click Delete button on the left of the Applied Fillers list.



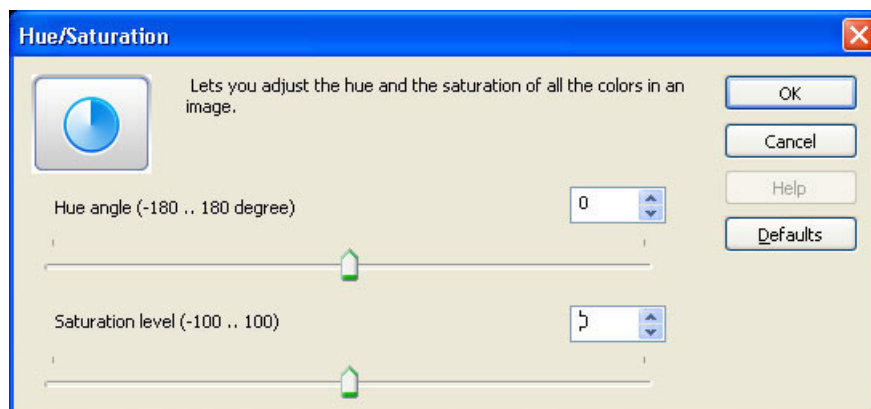
You can also simply **drag and drop** the selected filter from the List to any area in the main window.

- **To adjust filter's settings:**

1. In the List, select the video filter you want to customize.
2. Click Customize button to adjust the selected filter.



You can also **double-click** the filter you want to customize.



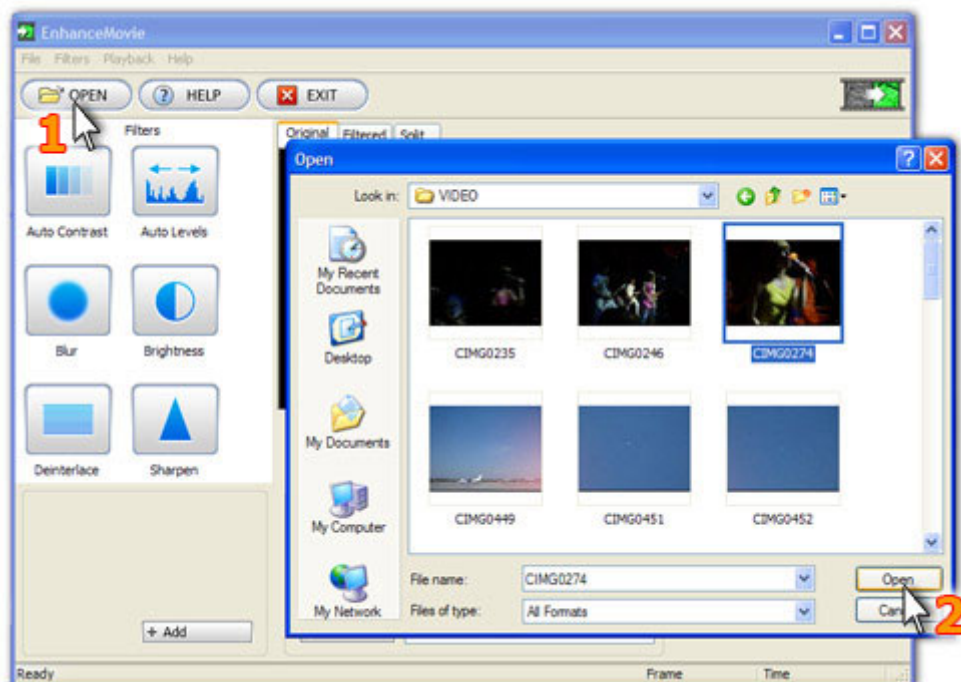
Enhancing Your First Video

Now, when you are familiar with the basic features of EnhanceMovie, you are ready to fix your first video with EnhanceMovie.

Enhancing videos with EnhanceMovie consists always of 3 simple steps.

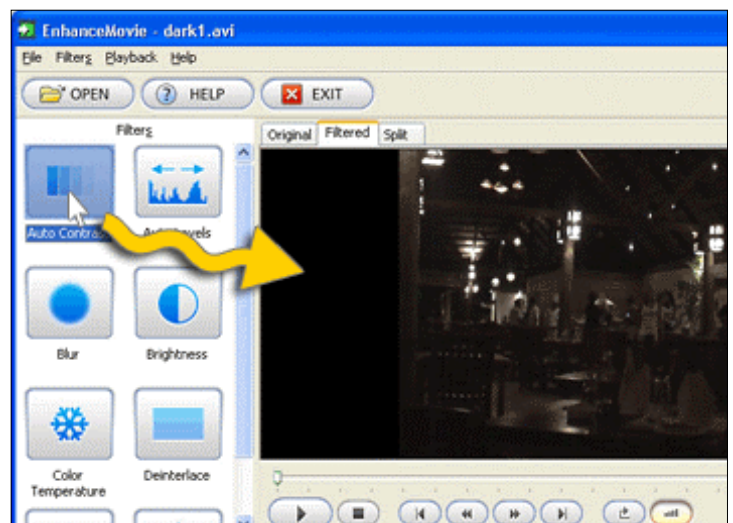
STEP 1. Opening a file

- Choose **File > Open** or click Open button.
- Select the name of the file you want to open.
- Click **Open**.



STEP 2. Drag and drop filters

- Select a filter you want to apply.
- Drag** it to the Preview Area.
- Release your mouse button. If you selected a not-automatic filter, adjust its settings and click OK.



STEP 3. Saving the video

- a. Choose **File > Save as...** or click Save button.
- b. Type a filename, choose a format from the Format menu and choose a location for the file.
- c. Click **Next**, choose a video codec or an MPEG type.
- d. Click **Next**, wait for the file to be saved. Click **Finish**.



That's it! You have successfully edited and saved your first video file, congratulations!

Getting more help

Select Help menu or press F1 to get answers to most of your questions and study detailed tutorials that describe how to solve common problems with video.

If you can't find an answer in Help, please visit Support at www.movavi.com.

Minimum System Requirements

- Microsoft Windows 98SE/ME/2000/XP (installation of all recent updates is recommended)
- Intel or AMD or compatible processors at 1 GHz minimum
- Display graphics minimum resolution of 800x600x 32-bit color
- RAM 128 megabytes (MB)
- Minimum 40 MB of free hard disk space is needed for installation, minimum 300 Mb for proper operation
- Administrative permissions are required for installation
- Sound card

All rights reserved.

Copyright © MOVAVI 2005. Any trademarks mentioned herein belong to their respective owners.